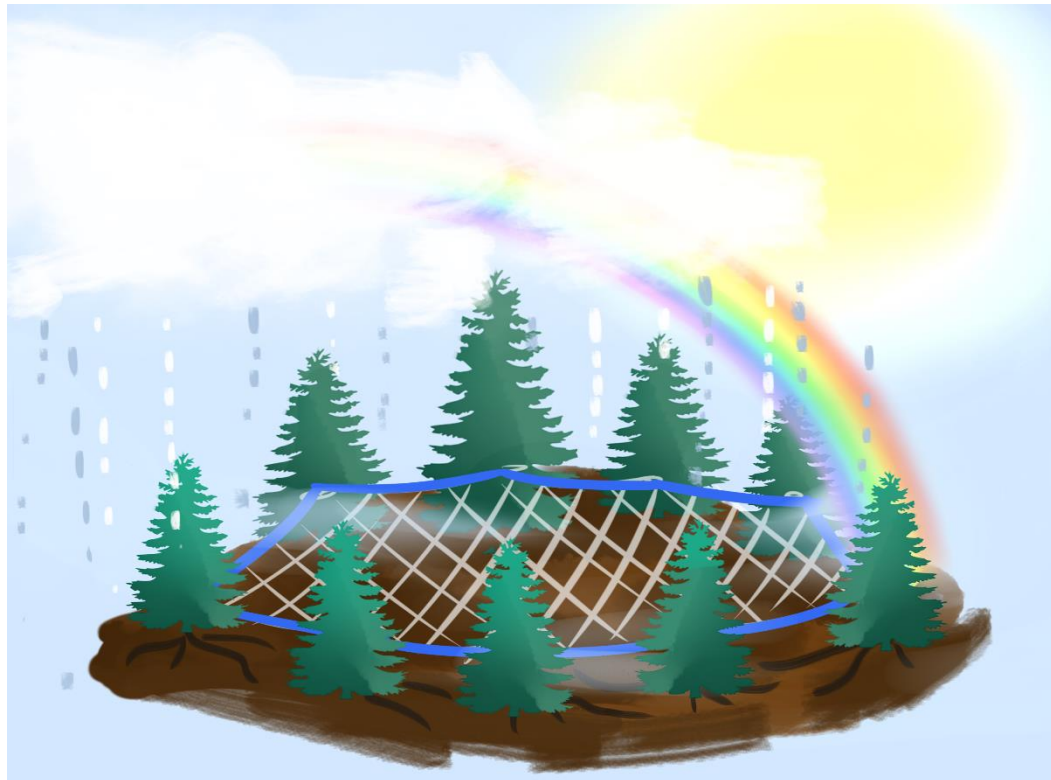


City of Palo Alto  
project safety net  
*for the well-being of Palo Alto's youth.*

Welcome to the

Project Safety Net Community Meeting!

Resilience and Sustainability



# PSN Mission

Our mission is to develop and implement an effective, comprehensive **community-based mental health plan** for overall youth well-being in Palo Alto.

The plan includes education, prevention and intervention strategies that together provide a **Safety Net for youth and teens** in Palo Alto, and defines our community's teen suicide prevention efforts.



# Meeting Agenda

January 24, 2018

3:30-5:30 pm

## A. Welcome & Introductions

## B. PSN Backbone Report

2017 Year In Review

2018 PSN Program Calendar

## C. Collectively Planning for PSN's Sustainability & Resiliency

PSN Infrastructure and Fiscal Agency Update

Collective Impact Webinar

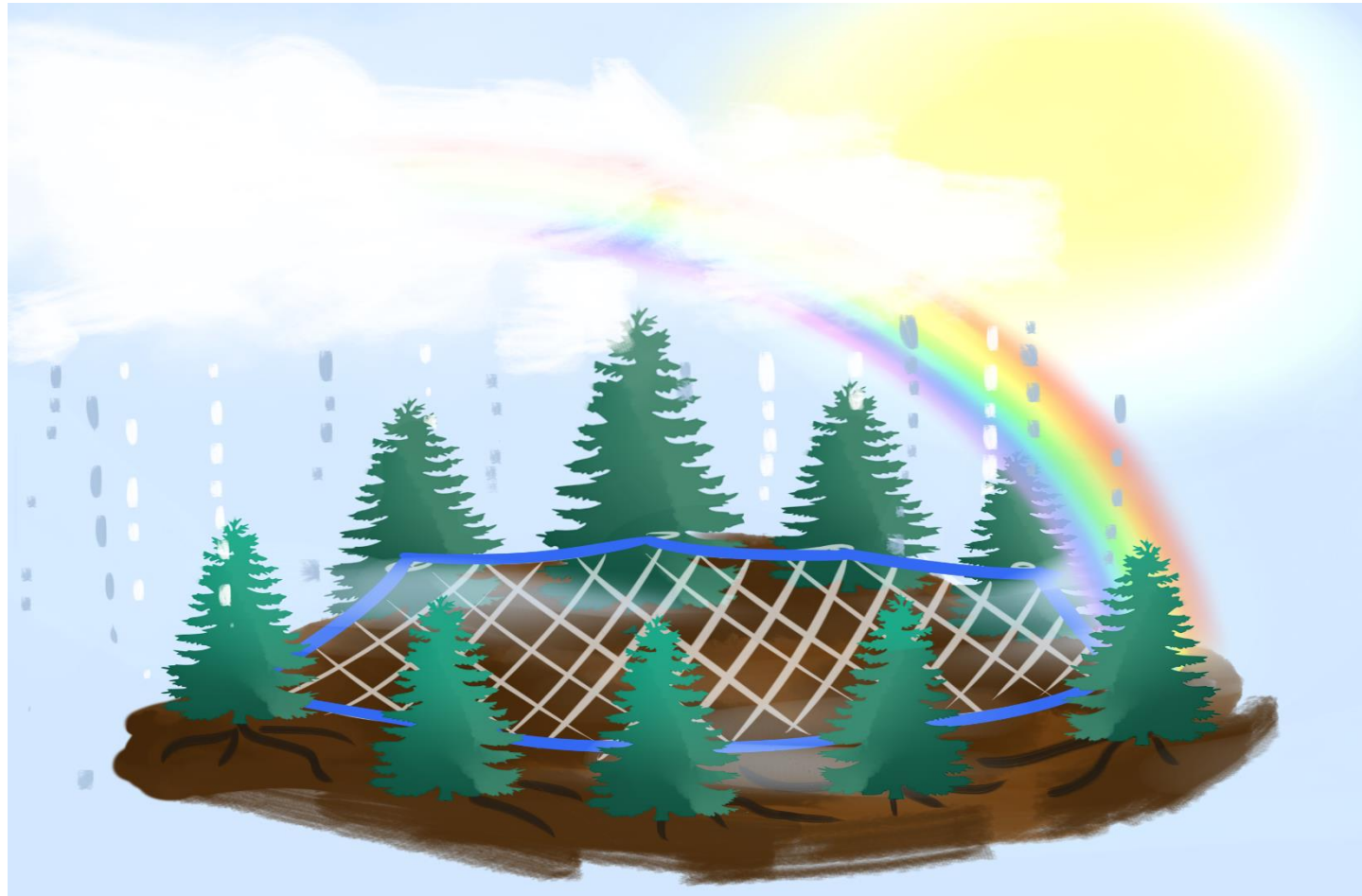
Facilitated Participant Activity

## D. Community Sharing & Announcements

## E. Closing, Meeting Reminder & Thank You



# Welcome



# Project Safety Net Backbone Report



Faith is taking the first step  
even when you don't see the  
whole staircase.

Martin Luther King Jr.





# 2017 Year In Review

## \* **Community Impact**

- \* 12 Community Collaborative Meetings/Forums
- \* 500+ Community Members Engaged Including Local Leaders, Mental Health and Social Service Providers, Parents and Youth
- \* 50+ PSN Community Partner Organizations
- \* QPR Trainings and Youth Mental Health First Aid Workshops
- \* Awareness Raising of Community Partner Events & Resources through PSN Website and Social Media Channels

# 2017 Year In Review

## \* **Youth-In-Action Presentations**

- \* Vivian Nguyen, May is Mental Health Matters Month Art Project
- \* Zach Gibson, “Tug of War”
- \* Meghna Singh, “Life Trajectories of PAUSD Alumni”

## \* **Partner-In Action Presentations**

- \* Young Minds Advocacy
- \* Project Cornerstone
- \* Children’s Health Council (CHC)
- \* LGBTQ Youth Space
- \* CASSY



# 2017 Year In Review

## \* **Major Accomplishments**

- \* CDC Epi-Aid Report & Community Survey
- \* Developmental Assets Community Forum
- \* Think Fund Mental Health Challenge Grant Announcement
- \* Launch of PSN 2.0, Project Safety Net's 3-Year Strategic Road Map

# 2018 Program Calendar

- \* **Driven by PSN 2.0 Road Map Goals**
- \* **Monthly Community Meetings Featuring a Theme or Issue Area**
  - \* Collaborative Action Team led
  - \* Roadmap focused
  - \* Community engagement and partner highlights
- \* **Outreach Events**
  - \* Enhance Presence in the Community
  - \* Raise Awareness of PSN's Work
  - \* Promote Community Resources

# Collectively Planning for Sustainability and Resiliency



# PSN Infrastructure & Fiscal Agency Update

- \* **Elevate partnership engagement through Collaborative Action Teams (CAT)**
  - \* Annual priority setting
  - \* Identify impact measurements
  - \* Lead and design community meeting
  - \* Contribute to annual report
- \* **Leadership restructure and transition (Jan – Mar)**
  - \* Executive Advisory Board – governance, fiscal agency & sustainability
  - \* Leadership Team – Roadmap advancement and coordination; community engagement

# Collective Impact Webinar & Facilitated Participant Activity



# Collective Impact Webinar & Facilitated Participant Activity

- \* **Collective Impact Forum Webinar (10 min)**
- \* **Facilitated Participant Activity (40 min)**
  - \* Introduction to Sustaining Collective Impacts Tool
  - \* Mapping Community Change Exercise & Reflections
  - \* Group Discussion

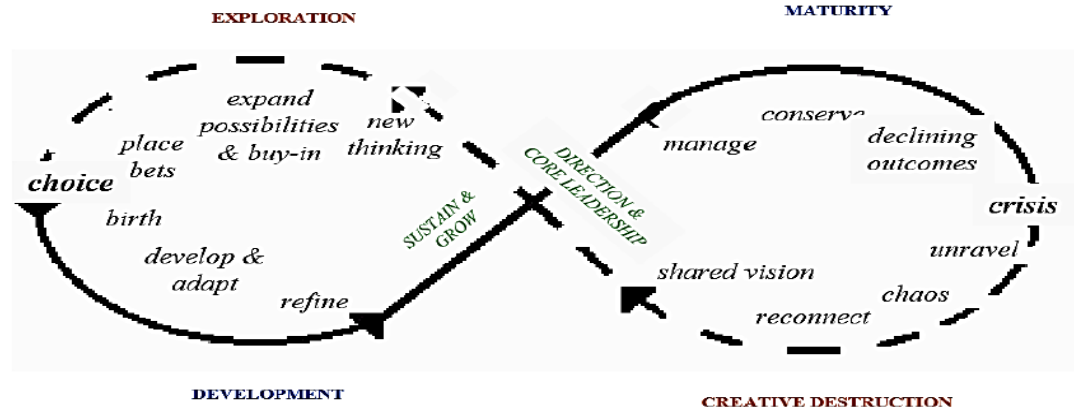
# Collective Impact Webinar & Facilitated Participant Activity

Traps	Description	Challenges
<b>SCARCITY</b>	<ul style="list-style-type: none"> <li>• Too few resources to explore new ideas so few or none take root.</li> <li>• Struggle to “birth” outcomes and support from broader community.</li> </ul>	<ul style="list-style-type: none"> <li>• The ideas are not compelling.</li> <li>• Underdeveloped decision-making process &amp; criteria.</li> <li>• Members disagree on what to pursue.</li> <li>• Members have insufficient credibility.</li> <li>• Energy spread too thin across many directions.</li> </ul>
<b>CHARISMA</b>	<ul style="list-style-type: none"> <li>• Unable to sustain or grow the work without original founder, host or primary funder.</li> <li>• “Parasitic” on the host(s) that gave it birth.</li> </ul>	<ul style="list-style-type: none"> <li>• Over reliance on key – often founding – members</li> <li>• Dependence on start-up pool of resources.</li> <li>• Approach works well only at a certain scale or in unique context.</li> </ul>
<b>RIGIDITY</b>	<ul style="list-style-type: none"> <li>• People are unable or unwilling to change or end an approach that no longer fits its context</li> <li>• Resistance to new ideas</li> </ul>	<ul style="list-style-type: none"> <li>• Focus on immediate return</li> <li>• Fear of uncertainty and self-interest.</li> <li>• Lack of clear exit rules, Pressure to continue by core constituency</li> <li>• Concern over perception of failure</li> </ul>
<b>CHRONIC DISASTER</b>	<ul style="list-style-type: none"> <li>• People are 'spinning'</li> <li>• Unable to get traction on a compelling new vision, values and intent</li> </ul>	<ul style="list-style-type: none"> <li>• Inability to let go of the past</li> <li>• Weak trust among members, volatile culture</li> <li>• Difficulty agreeing on shared vision and values.</li> </ul>



# Mapping Community Change Exercise & Reflections

## The Phases of Community Change Eco-Cycle Worksheet



Map the following on the Eco-Cycle:

M = Me  
D = Department  
O = Organization  
C = Collaborative

- What does the mapping exercise mean for your work right now?
- How might you improve outcomes for your organization or with your community partners?
- What are some possible first steps?

# Group Discussion

- \* What does the mapping exercise mean for your efforts to advance Project Safety Net's work?
- \* How might you improve outcomes for Project Safety Net?
- \* What are some possible first steps?
- \* Additional comments and take aways

# Community Sharing and Announcements



# Thank You!

**Next PSN Community Meeting:**

**Attention to Youth Voices**

**February 28, 2018**

**3:30-5:30 pm**

**Embarcadero Room, Rinconada Library**

City of Palo Alto  
**project safety net**  
*for the well-being of Palo Alto's youth.*



# Networking



# PSN Mission

Our mission is to develop and implement an effective, comprehensive **community-based mental health plan** for **overall youth well-being in Palo Alto**.

The plan includes education, prevention and intervention strategies that together provide a **Safety Net for youth and teens in Palo Alto**, and defines our community's teen suicide prevention efforts.